

# Are we smart enough for Smart plants?

## Experience from 15 years on the field



■ Predictive AI – the end of maintenance?



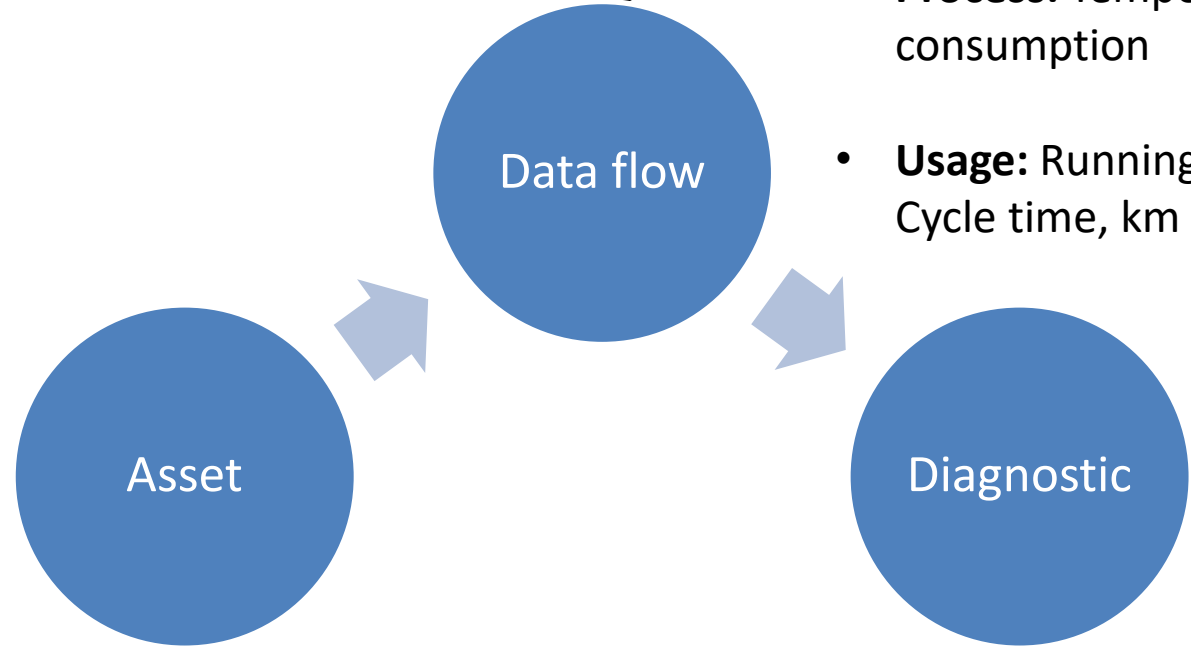
850+ customer sites in Asia



■ The consultant dream: From the asset to the digital twin. • **Process:** Temperature, Pressure, Energy consumption

**Connection – Requires:**

- Ad-hoc Sensors
- Source of Power
- Connectivity, esp. if subsequent diagnostic is performed in Cloud



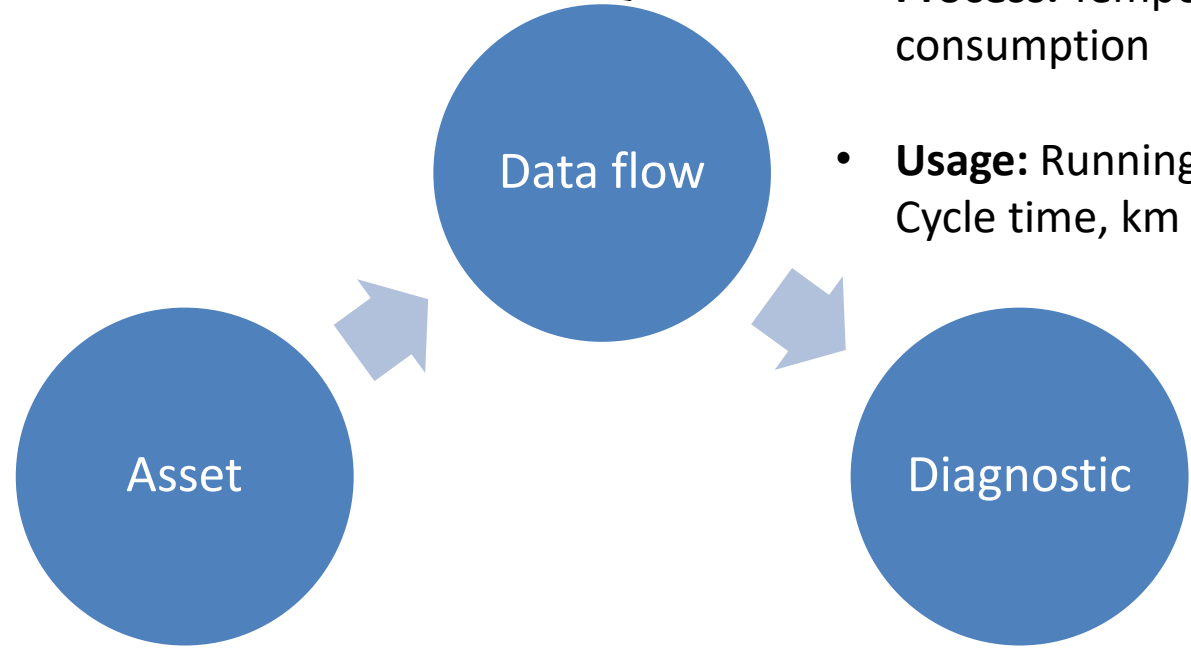
- **Usage:** Running time, quantity produced, Cycle time, km used,...

- **Rule-based:** >, <, IF, AND, ....
- **Data-driven:**
  - Patterns associated with issues
  - Drift from a reference pattern

■ The consultant dream: From the asset to the digital twin. **Process:** Temperature, Pressure, Energy consumption

**Connection – Requires:**

- Ad-hoc Sensors
- Source of Power
- Connectivity, esp. if subsequent diagnostic is performed in Cloud



- **Usage:** Running time, quantity produced, Cycle time, km used,...

**Concerns raised by this model**

- Diagnostic running on site or on-premises?
- Ownership of the algorithm?

→ Implications in case of a critical asset?  
Think about the supplier – client balance of power, liabilities, etc..

- **Rule-based:** >, <, IF, AND, ....
- **Data-driven:**
  - Patterns associated with issues
  - Drift from a reference pattern



■ Consultant's dream turned nightmare – the 'Cassandra effect'



So, you predicted a failure.

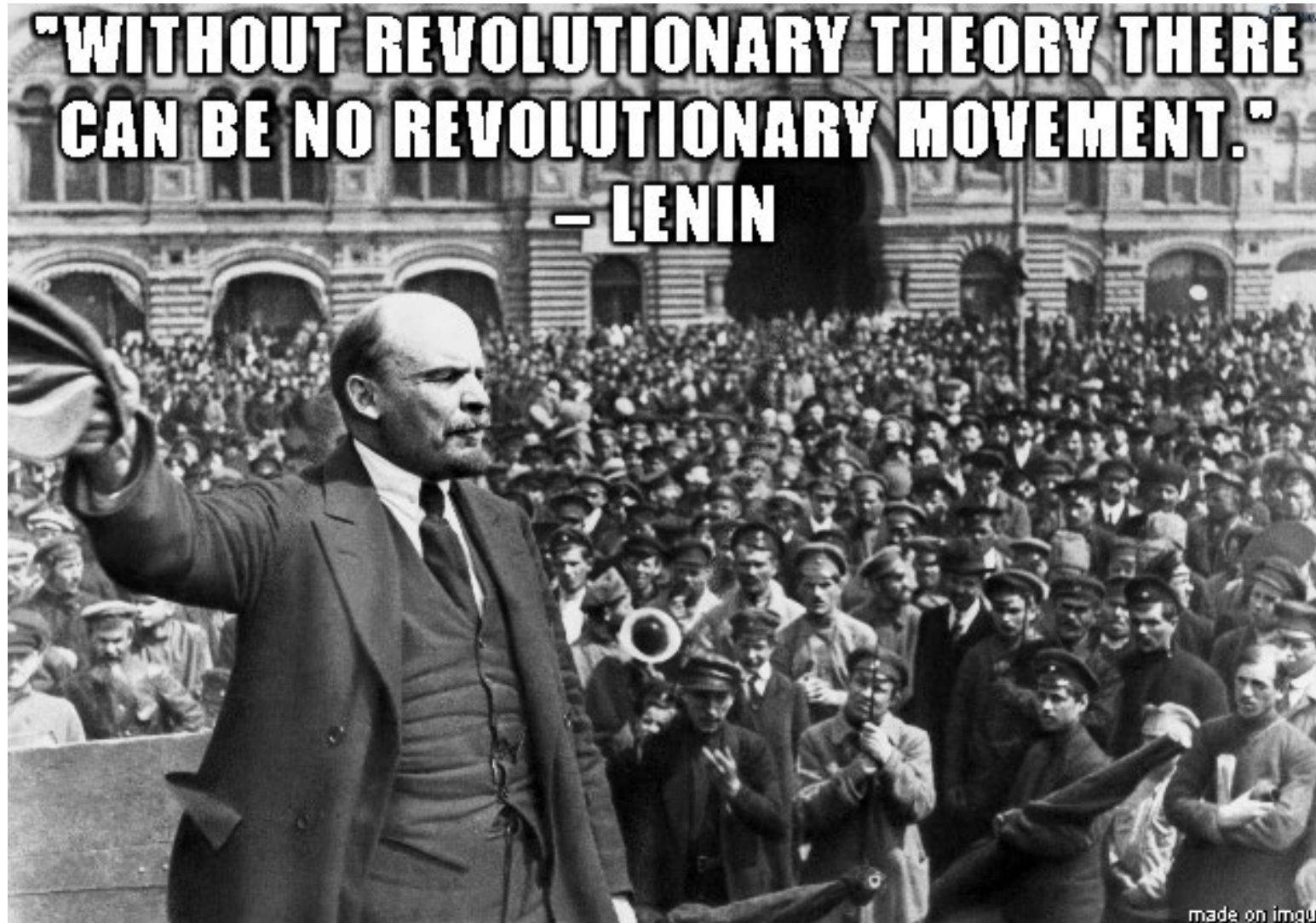
Now, do your organization know what to do?

# Consultant's dream turned nightmare – 'Information Overload'





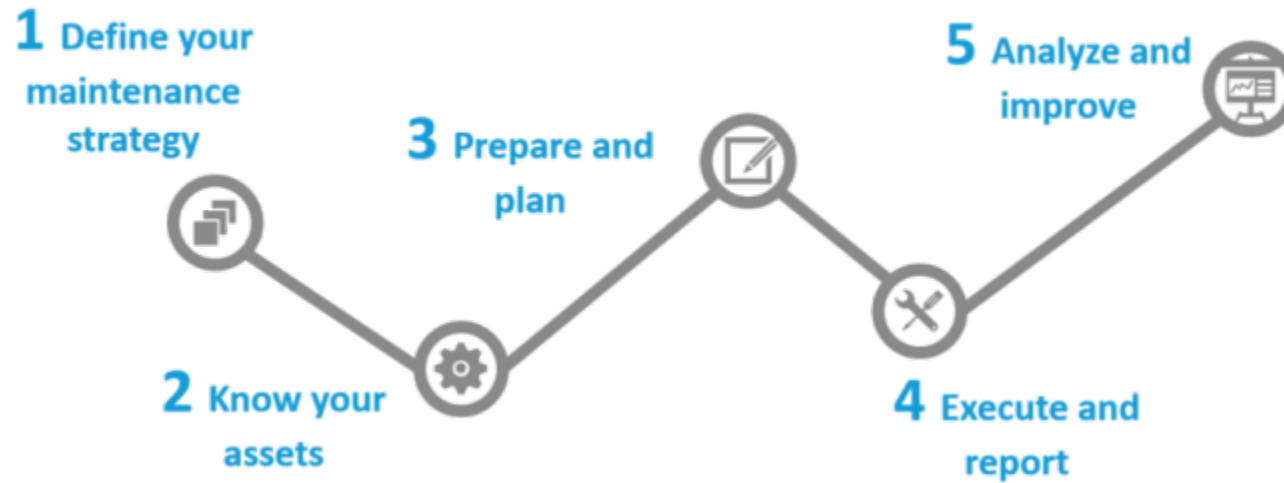
- How to navigate the 4<sup>th</sup> industrial revolution?



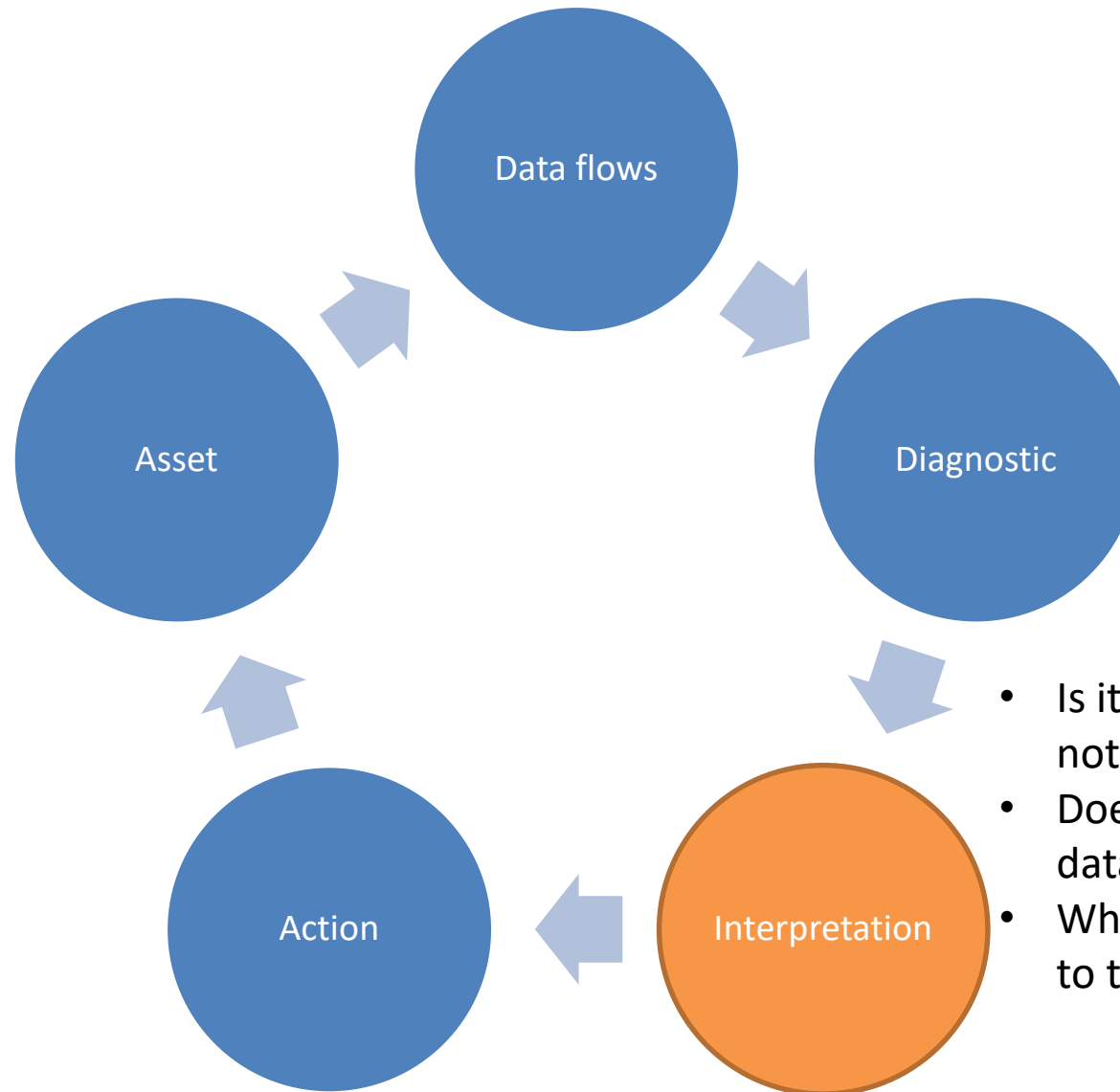


## ■ 5 steps for a sustainable implementation

An ISO 55000-compliant Core Model, to align the “smart” projects with business needs



## ■ The Physical – Digital – Physical loop

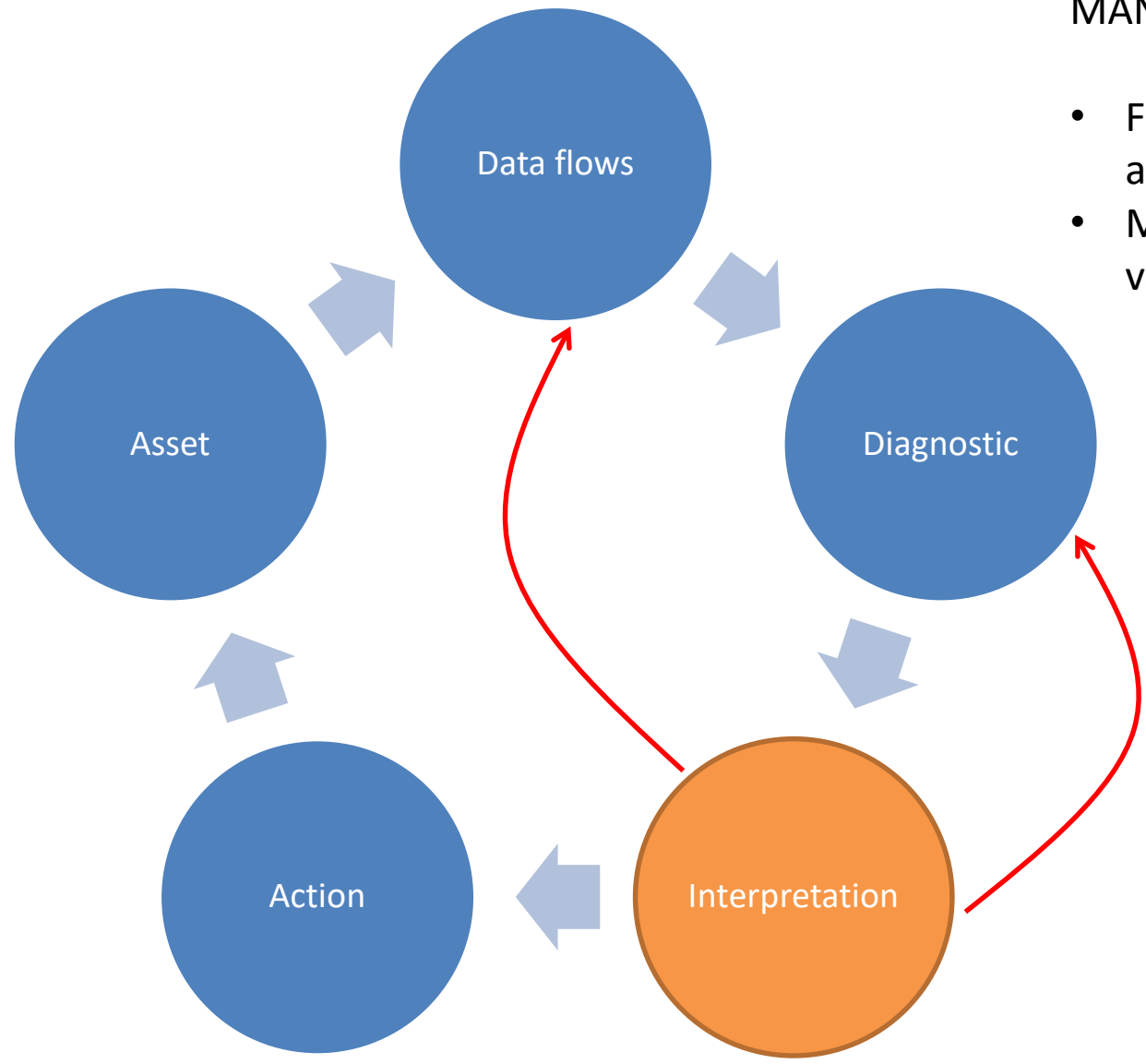


- Is it a breakdown? (Or can I ignore this notification?)
- Does my maintenance plan needs this data ?
- What is the best response, according to the maintenance plan?

■ Data-driven Machine Learning needs context and feedback

**CONTEXT – in the form of (STRATEGIC) ASSET MANAGEMENT PLAN**

- Focuses the data acquisition process
- Makes algorithm truly valuable

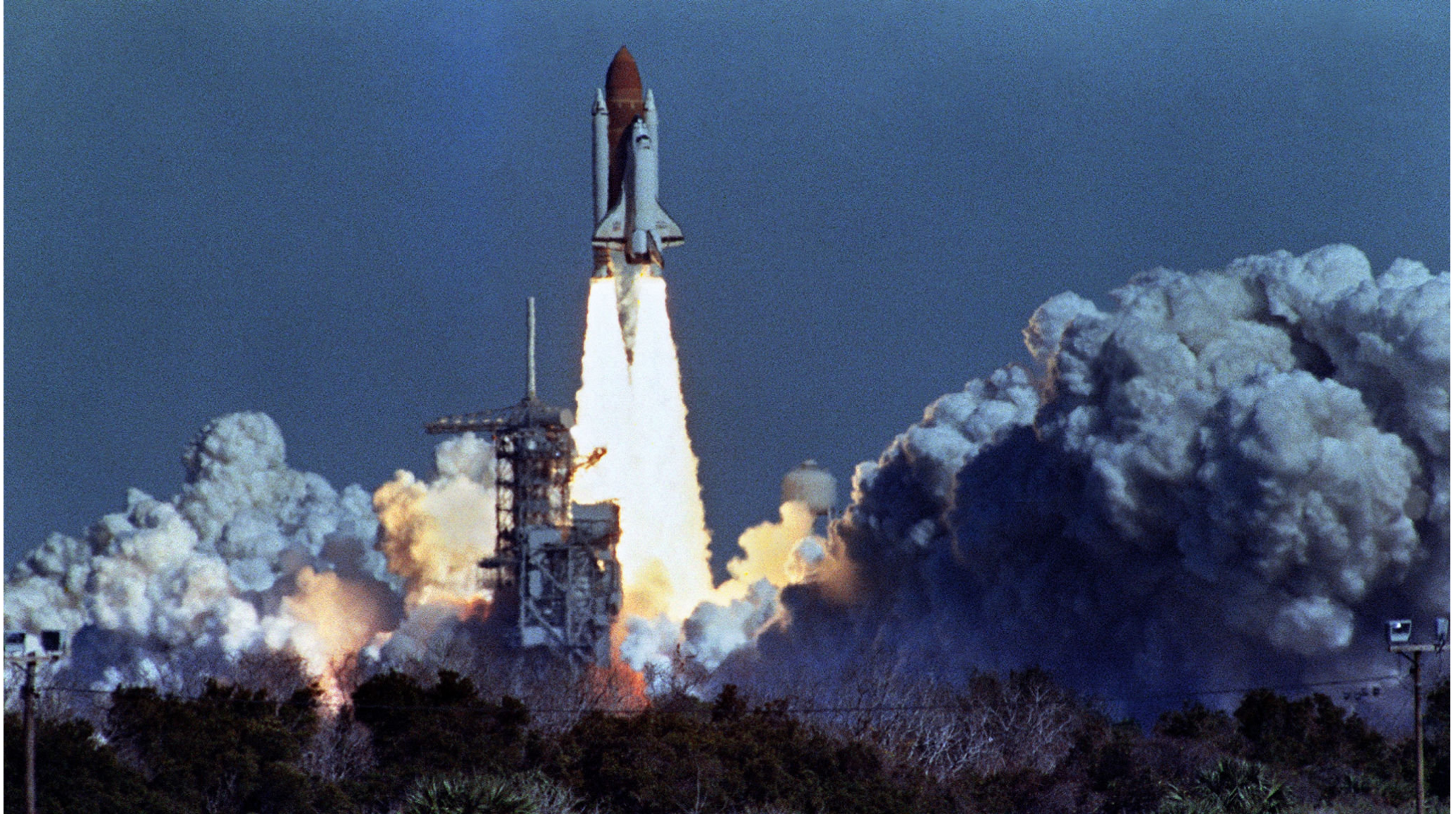


**FEEDBACK**

- Improves the algorithm
- Automate/facilitate decision making



■ The weakest link...



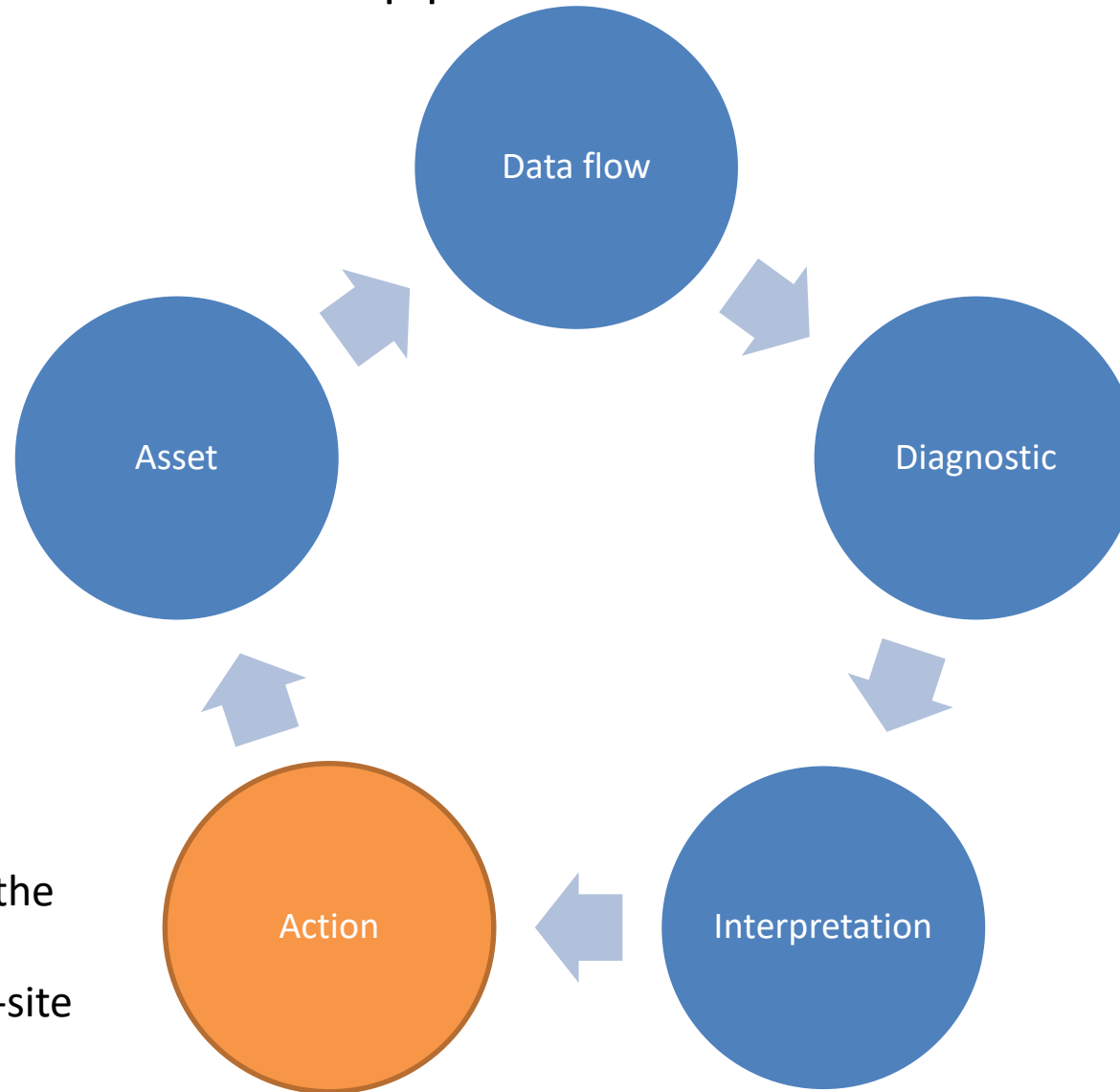


- The weakest link... is your biggest asset



A reliance on machines makes human job more important, not less.

■ Starting from the critical Execution step prevents the Cassandra effect



- Allocate to the right resource
- Monitor and Ensure the work gets done
- Provide guideline on-site through mobiles



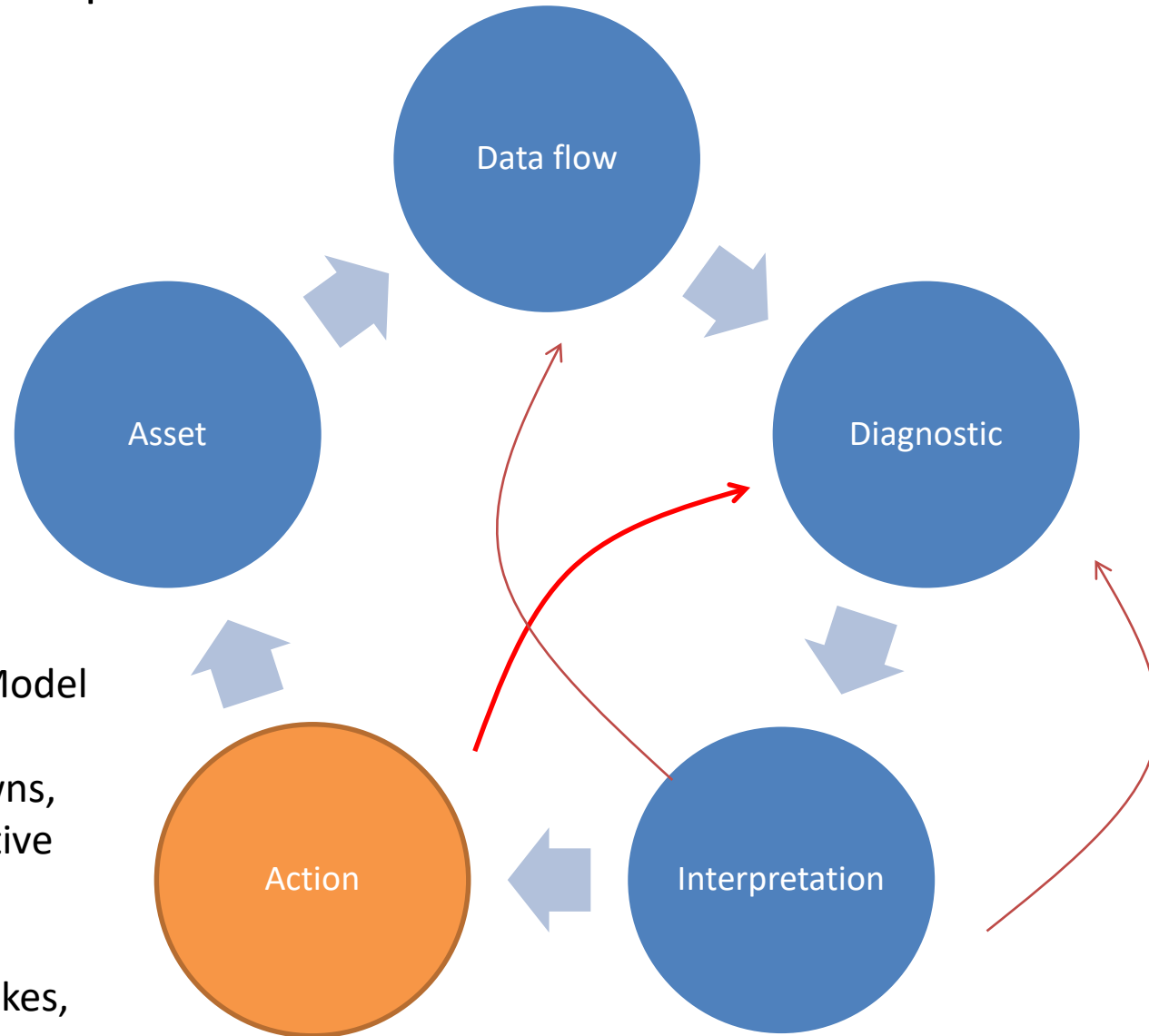
## ■ Close the Asset performance loop

Direct creation and access to know-how by field technicians

- ▶ Assets identification by scanning
- ▶ Access to technical data
- ▶ Work execution
- ▶ Maintenance inspections
- ▶ Operators rounds
- ▶ Meter readings & measurements
- ▶ Incident reporting (safety)
- ▶ Access to analytics & reports



- Critically, it improves the predictive model further



**Adds the following inputs**

- **Descriptive:** Age, Brand & Model
- **Historical:** Recent breakdowns, Delay or absence of Preventive maintenance
- **Situational:** operators mistakes, wrong input, etc...

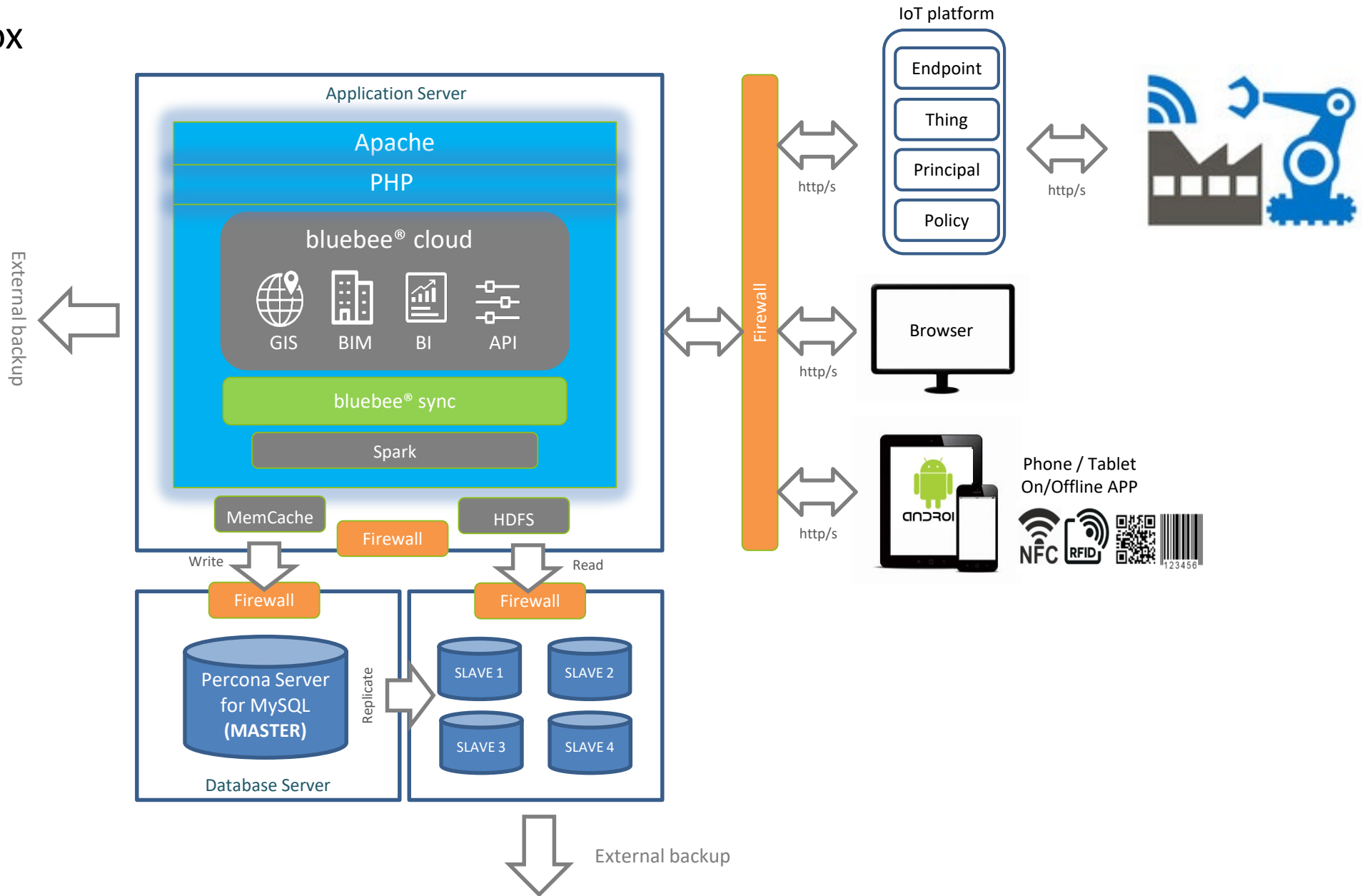


Finally – make sure results will be visual

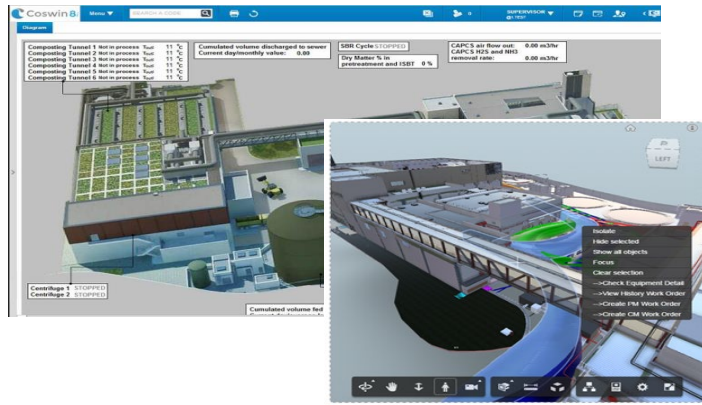




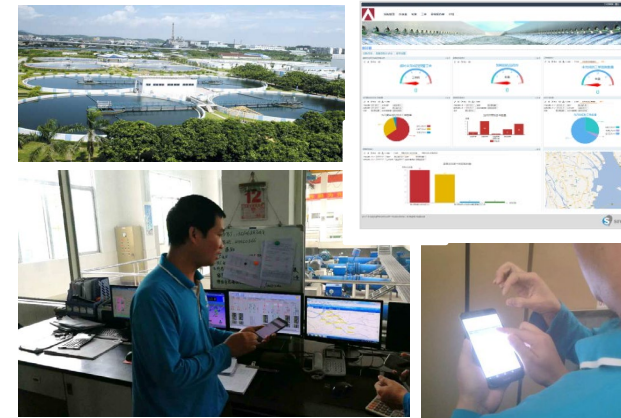
# ■ Inside the box



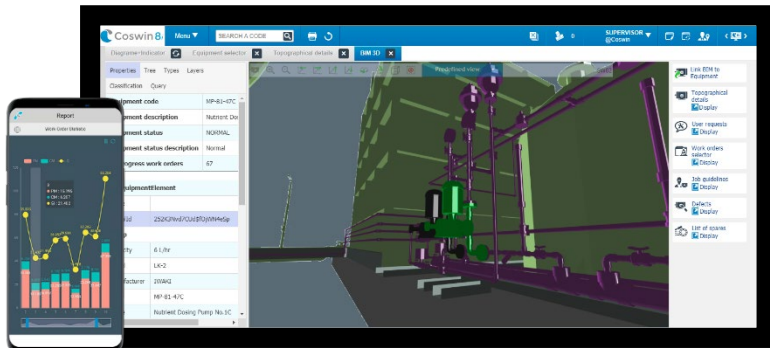
# Some Siveco China references



Hong Kong's Organic Resources Recovery Center  
Preventive activities based on asset condition



Zhongshan Water  
Dynamic allocation of workforce



Hong Kong's Sanwai Sewage Treatment Works

Condition-based Maintenance



French National Railways (SNCF)  
Aggregation of multi-sources collected data under Asset Performance



## ■ Conclusion



A revolution is a return from the fictitious to the real.





**Guillaume Gimonet, Operations Director**  
[Guillaume.gimonet@sivecochina.com](mailto:Guillaume.gimonet@sivecochina.com)  
 Mobile +86 15900738024



**王北宁 (Paul) 客户经理**  
[Paul.Wang@sivecochina.com](mailto:Paul.Wang@sivecochina.com)  
 手机 +86 13973178338

For more on Siveco:  
[www.sivecochina.com](http://www.sivecochina.com)

